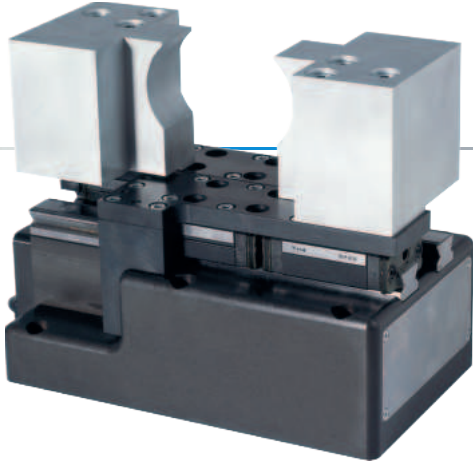


2-JAW PARALLEL GRIPPERS WITH LONG STROKE SERIES GEH8000

▶ PRODUCT ADVANTAGES



“The strong”

▶ High gripping force

Using the high gripping force, you can safely handle even the heaviest workpieces

▶ Servo drive

Position, speed and force control in combination with a mechanical self locking mechanism guarantee the highest functionality

▶ Multibus

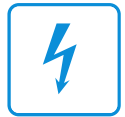
How you stay flexible: PROFIBUS, SERCOS III, PROFINET IO, EtherNet/IP or EtherCat - You decide what harmonises best with your system

▶ SERIES CHARACTERISTICS

Installation size

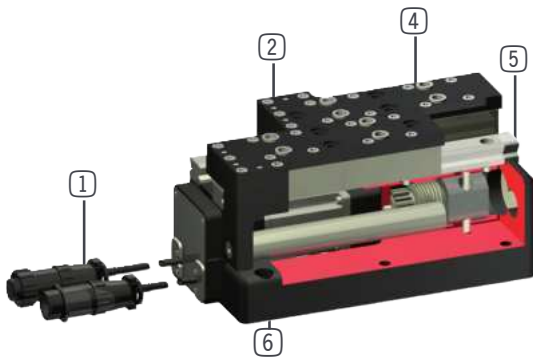
GEH86XX

PB Profibus	●
PN Profinet, EtherCat, EtherNet/IP, Sercos	●
 10 million maintenance-free cycles (max.)	●
 Integrated sensing	●
 Self locking mechanism	●
IP 54 IP54	●



► BENEFITS IN DETAIL

1



- ① **Energy supply**
- ② **Removable centering sleeves**
- quick and economical positioning of the gripper fingers
- ③ **Drive**
- AC servo motor
- ④ **Gripper jaw**
- hardened steel
- individual gripper finger mounting
- ⑤ **Precise linear guide**
- high forces and moments capacity
- guide wagon with wiper for harsh environments
- ⑥ **Mounting and positioning**
- ⑦ **Robust, lightweight housing**
- Hard-coated aluminum alloy
- ⑧ **Synchronization**
- via rack and pinion

► TECHNICAL DATA

Installation size	Stroke per jaw [mm]	Holding force [N]	Weight [kg]	IP class
GEH8660	60	200 - 3200	10	IP54

► FURTHER INFORMATION IS AVAILABLE ONLINE



All information just a click away at: www.zimmer-group.com. Find data, illustrations, 3D models and operating instructions for your installation size using the order number for your desired product. Quick, clear and always up-to-date.